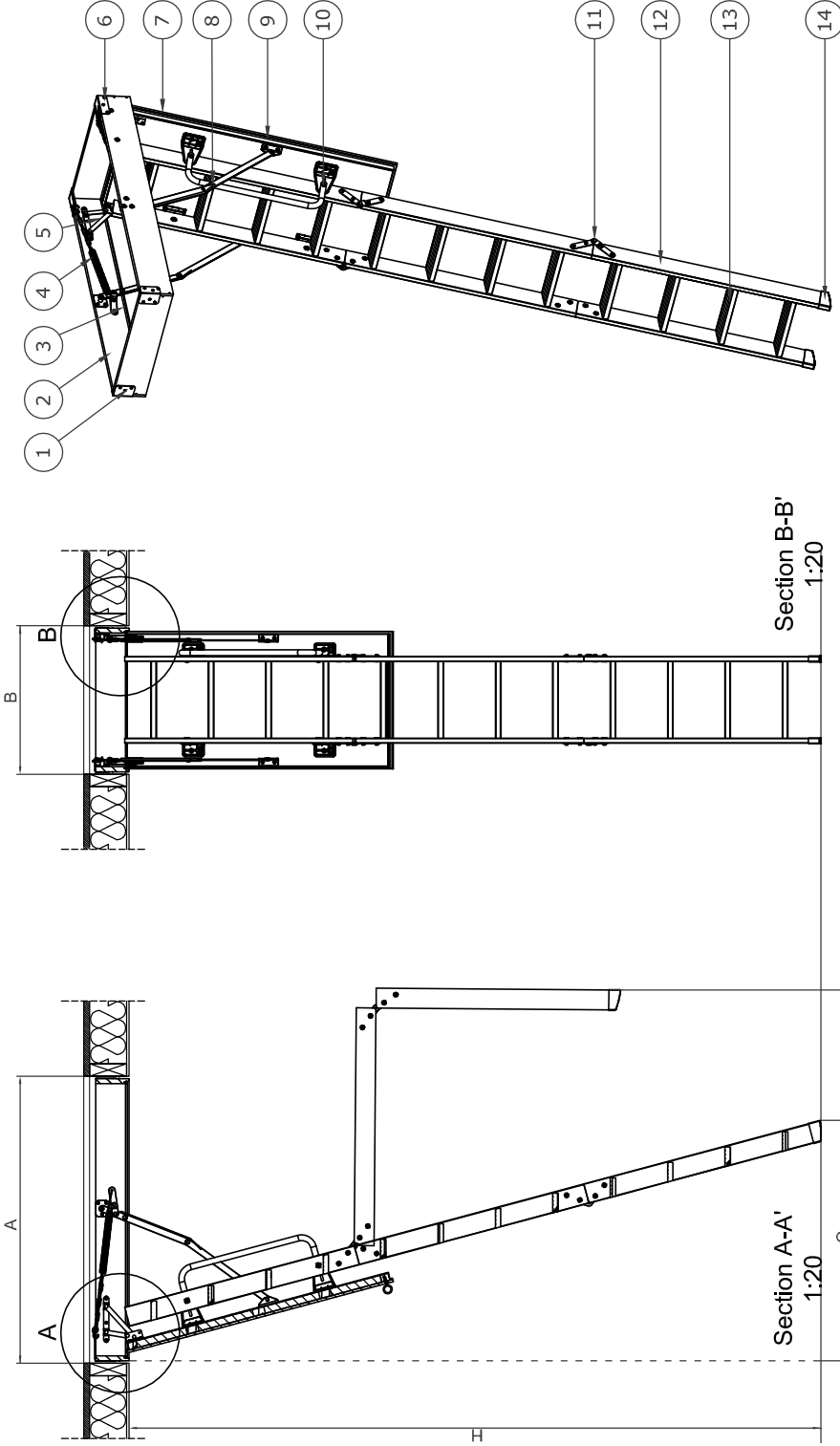
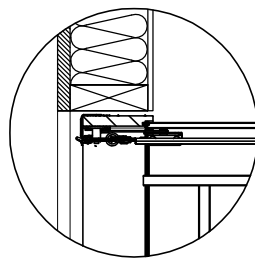


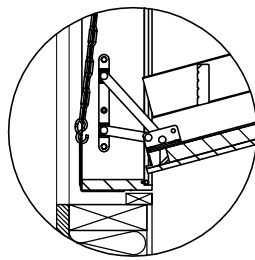
INDICATIVE SECTIONAL VIEW



- 1. Flick-Fit Brackets
- 2. Framebox
- 3. Seal
- 4. Chain with Spring
- 5. Trapdoor Hinge
- 6. Corner Bracket
- 7. Fire Resistance MDF Trapdoor
- 8. Hinge
- 9. Expanding Seal
- 10. Handrail with mounting brackets
- 11. Ladder Hinge
- 12. Ladder Stile
- 13. Retreading Rung
- 14. Plastic Feet



Detail B  
1:10



Detail A  
1:10



Keylite Product Code	KYL-FR02	KYL-FR05	KYL-FR08
A x B	550x1160	600x1160	700x1160
Frame external dimension - (mm)	530x1140	580x1140	680x1140
Number of ladder sections	3	3	3
C (mm)	1025	1025	1025
R (mm)	1565	1565	1565
H (mm)	2800	2800	2800



[www.keylitteroofwindows.com](http://www.keylitteroofwindows.com)  
 E-Mail: [info@keylite.co.uk](mailto:info@keylite.co.uk)  
 Tel: 028 8975 9821 Fax: 028 8975 9823  
 Keylite Roof Windows Ltd  
 County Tyrone, Northern Ireland BT69 3LLU, Co. Londonderry



This drawing is for informational/demonstrative purposes only and is not intended to constitute a basis for performance. All dimensions are given in millimetres. Read instructions and follow them carefully. All construction details are subject to change without notice. Keylite Roof Windows Ltd is not responsible for the installation quality on the part of the installer. Documentation only for personal use. Copying and distributing without permission is prohibited.

Opening pool		DWS No.	KYL-FR	Scale	Format
			Rev. A, 2018	1:10 1:20	A3

Loft Ladder  
 KYL-FR