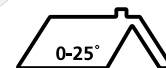
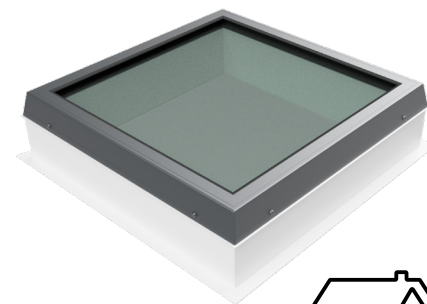


# Flat Glass Rooflight

With its anthracite grey frame and double glazed finish, the Keylite Flat Glass Rooflight provides a contemporary alternative to Polycarbonate flat roof products.

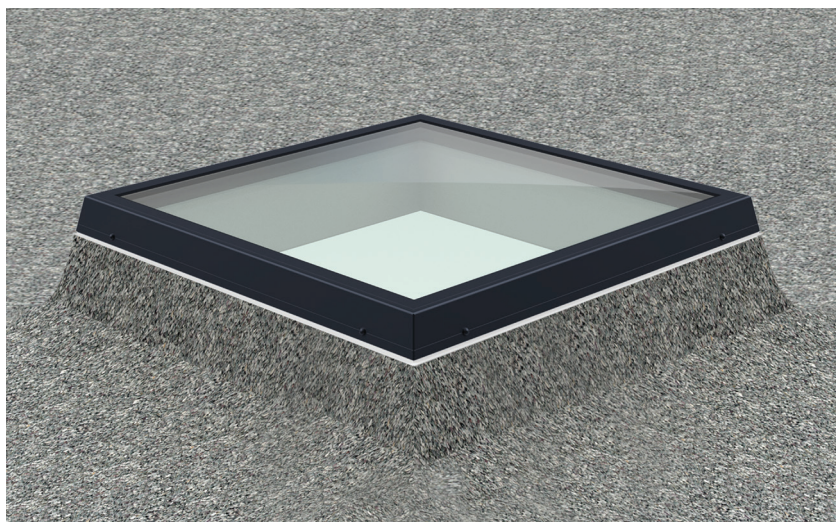


\*See note for below 5°

## Features

- ▶ **Thermal Performance** - All Keylite Flat Glass Rooflights are supplied with an insulated PVC upstand for increased thermal efficiency and a reduction in heat loss. They boast an impressive 1.26 W/m<sup>2</sup>.K U-Value for the overall unit.
- ▶ **Warm Edge Glazing** - Every Keylite Flat Glass Rooflight has a warm edge glazing unit incorporated into it as standard, to enhance the windows performance and reduce the occurrence of condensation.
- ▶ **Additional Safety** - The glazing unit of all Keylite Flat Glass Rooflights comprises of a 6mm Toughened outer pane, 16mm Argon gas filled cavity and an 8.8mm laminated inner pane. The lamination between the two inner panes means that were an object to make contact with the glass, if the force is sufficient enough to shatter the glass the lamination ensures the glazing unit remains intact and does not fall causing potential harm to the occupants below.
- ▶ **Increased Security** - The unique patented security screw-bolts that mechanically fix the glazed top to the PVC upstand provide the occupiers with increased peace of mind that the unit cannot be breached through simply removing the glazed top.
- ▶ **Operation** - Keylite Flat Glass Rooflights are supplied fixed shut as standard; however additional upgrades to manual and electric operation are also readily available.
- ▶ **Installation** - All Keylite Flat Glass Rooflights are intended to be installed on roof pitches between 5° - 25°.

***\*This product can be installed on roof pitches below 5° when mounted to an additional upstand at 5°. Were the unit is to be installed below 5° then there is an increased risk of water and dirt lying on the glass where over time there is a chance this could lead to some minor discoloration of the glass.***



## Application

- ▶ Keylite recommend installing the Flat Glass Rooflights on a 5° incline as this will allow any surface water to run off the glass effectively to ensure the unit remains watertight. Where the roof pitch is below that, an additional up stand at 5° is required.
- ▶ For installation of units above 2.2m Keylite also recommend electrical operation.

## Maintenance

- ▶ The glazing pane of a Keylite Flat Glass Rooflights can be cleaned with a soft, clean cloth/chamois or non-metal squeegee. Clean water will be sufficient for cleaning the pane.
- ▶ The PVC upstand is manufactured from shock resistant PVC and similar to the Glazing Pane, can be cleaned with non-abrasive clothes and clean water. Where stronger cleaning compounds are required in order to remove more stubborn stains please consult the Keylite Technical Department.

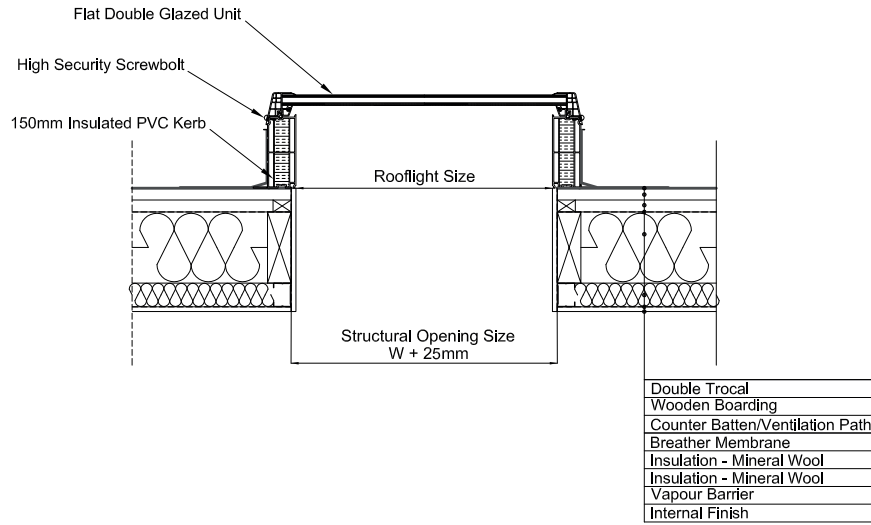
## Guarantee

- ▶ **10 Years** – Keylite's hassle free guarantee on Flat Glass Rooflights.
- ▶ **3 Years** – Keylite's hassle free guarantee on, electrics and accessories.

## Finish Options

- ▶ **Interior** – White PVC
- ▶ **Exterior** – Grey

## Technical Information



## Technical Data

Characteristic	Values
Thermal transmittance of rooflight - Rooflight with glazing insulating laminated glass	$U_g = 1.1$ , $U_w = 1.26 \text{ W/m}^2 \cdot \text{K}$
Thermal transmittance of upstand - Splayed PVC upstand with PUR insulation - Vertical PVC upstand with PUR insulation	$U_p = 0.88 \text{ W/m}^2 \cdot \text{K}$ $U_p = 0.92 \text{ W/m}^2 \cdot \text{K}$
Acoustic performance	$R_w = 31 (-1; -1) \text{ dB}$
Air permeability	Class 2
Watertightness	Pass (without penetration of water)
Up-effect loading	UL 3000
Down-effect loading	DL 2500
Impact resistance	CWCT Class 1
Fire rating	Class B-s2, d0
Light transmittance	76%
Glazing	Double glazed 6mm toughened outer 8.8mm laminated inner pane

## Size Range

Size Code	Description	S6	R69	S8	S9	R912	S10	R1015	S12
Size WxH (mm)		600x600	600x900	800x800	900x900	900x1200	1000x1000	1000x1500	1200x1200
Structural Opening Size		625x625	625x925	825x825	925x925	925x1225	1025x1025	1025x1525	1225x1225

## Technical Information

Window Type	Window Size	Unit Size		Structural Opening Size Required	
		(mm)		(mm)	
		W	H	W	H
FRG	S6	600	600	625	625
FRG	R69	600	900	625	925
FRG	S8	800	800	825	825
FRG	S9	900	900	925	925
FRG	R912	900	1200	925	1225
FRG	S10	1000	1000	1025	1025
FRG	R1015	1000	1500	1025	1525
FRG	S12	1200	1200	1225	1225
FRG	S5	500	500	525	525
FRG	R612	600	1200	625	1225
FRG	S7	700	700	725	725
FRG	R710	700	1000	725	1025
FRG	R1020	1000	2000	1025	2025
FRG	R1220	1200	2000	1225	2025

### GB

Unit 3 Gateway Road, Burton Gateway,  
Burton upon Trent, DE13 8FL

T: +44 (0) 28 8676 7512  
E: technicalsupport@keylite.co.uk

### NI & ROI

KG2, Ballyreagh Industrial Est. Sandholes  
Road, Cookstown, Co. Tyrone, BT80 9DG