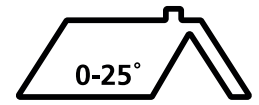


Flat Roof Dome

Roof Windows



Keylite Flat Roof Domes are thermoformed with a triple skin construction. Polycarbonate is virtually unbreakable, with an impact strength 250 times greater than glass. Keylite Flat Roof Domes can be supplied with a clear or frosted finish.

Features

- ▶ Triple skin polycarbonate (clear or frosted) and PVCu 150mm splayed upstand.
- ▶ U-Value of 1.3W/m²k.
- ▶ Patented security screwbolts.
- ▶ Extended range of ventilation, access, upstands also available upon request.
- ▶ New 150mm high Upstand is complete with plasterboard groove as standard

Guarantee

- ▶ Keylite Flat Roof Domes have a 10 Year guarantee.
- ▶ 1 year accessories guarantee.
- ▶ Electric Actuator - 24 month guarantee.

Dome Options

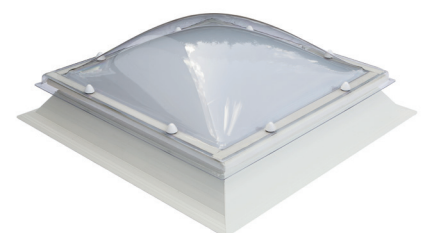
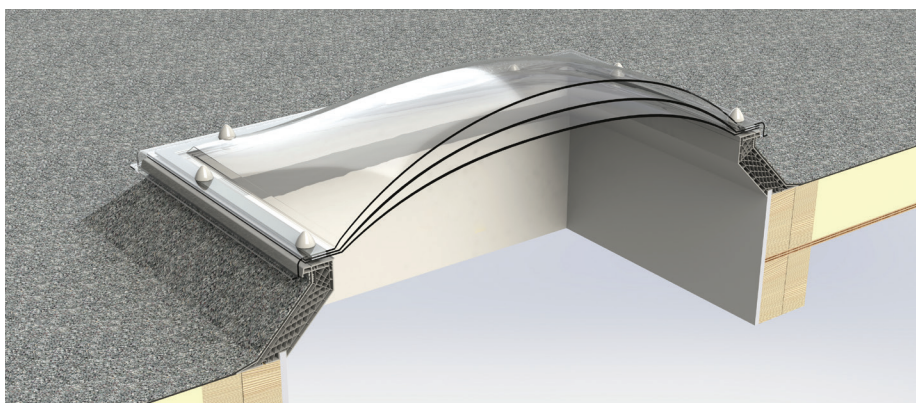
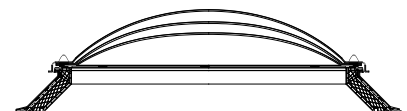
Dome Shapes	Square, Rectangular and Circular
Finish	Clear, Frosted or Heat reflection
Light Transmission	Clear 70%, Frosted 45%, Heat Reflection 40%
Solar Gain	Clear 60%, Frosted 43%, Heat Reflection 44%
Fire Rating	BS 476: Part 3 AA BS 476: Part 7 Class 1 Class 0 for Building Regulation Purposes

Upstands

Construction	Extruded Multi Chamber PVCu proprietary upstand
Thermal Value	U-Value of .89W/m ² k independently Hot Box tested
Insulation	Can accomodate up to 150mm of roof insulation if a 300mm high upstand is used.
Waterproofing	Suitable for build-up felt, asphalt, single ply, hot melt and liquid applied membranes

Ventilation Options

Construction	Proprietary extruded PVCu hinged opening frame
Operation	Motorised Linear 24v DC Actuator Opening to 160°
Other Options	Controllable trickle vent, Controllable rotating vent, Powered extractor fan, manual spindle



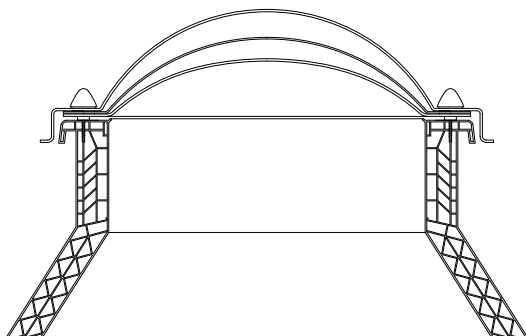
Technical Information

Structural Opening Size		600x600	600x900	800x800	900x900	900x1200	1000x1000	1000x1500	1200x1200
Overall Upstand Size		800x800	800x1100	1000x1000	1100x1100	1100x1400	1200x1200	1200x1700	1400x1400
Visible Glass Size		435x435	435x735	635x635	735x735	735x1035	835x835	835x1335	1035x1035
Fixed	Clear	FRD-S6	FRD-R69	FRD-S8	FRD-S9	FRD-R912	FRD-S10	FRD-R115	FRD-S12
	Frosted	FRD-S6-FR	FRD-R69-FR	FRD-S8-FR	FRD-S9-FR	FRD-R912-FR	FRD-S10-FR	FRD-R115-FR	FRD-S12-FR
Manual Opening	Clear	FRD-S6-M	FRD-R69-M	FRD-S8-M	FRD-S9-M	FRD-R912-M	FRD-S10-M	FRD-R115-M	FRD-S12-M
	Frosted	FRD-S6-FR-M	FRD-R69-FR-M	FRD-S8-FR-M	FRD-S9-FR-M	FRD-R912-FR-M	FRD-S10-FR-M	FRD-R115-FR-M	FRD-S12-FR-M
Electric Opening	Clear	FRD-S6-E	FRD-R69-E	FRD-S8-E	FRD-S9-E	FRD-R912-E	FRD-S10-E	FRD-R115-E	FRD-S12-E
	Frosted	FRD-S6-FR-E	FRD-R69-FR-E	FRD-S8-FR-E	FRD-S9-FR-E	FRD-R912-FR-E	FRD-S10-FR-E	FRD-R115-FR-E	FRD-S12-FR-E

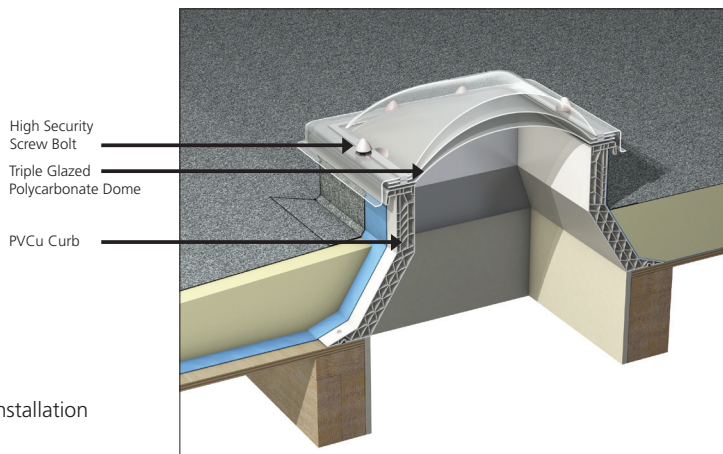
- ER - Electric Remote Operation with Rain Sensor
- ES - Electric Switch Operation

Window Type	Window Size	Unit Size		Structural Opening Size Required		External Upstand Size		Daylight Size	
		(mm)		(mm)		(mm)		(mm)	
		W	H	W	H	W	H	W	H
FRD	S6	600	600	625	625	540	540	400	400
FRD	R69	600	900	625	925	540	840	400	700
FRD	S8	800	800	825	825	740	740	600	600
FRD	S9	900	900	925	925	840	840	700	700
FRD	R912	900	1200	925	1225	840	1140	700	1000
FRD	S10	1000	1000	1025	1025	940	940	800	800
FRD	R1015	1000	1500	1025	1525	940	1440	800	1300
FRD	S12	1200	1200	1225	1225	1140	1140	1000	1000
FRD	R612	600	1200	625	1225	540	1140	400	1000
FRD	S75	750	750	775	775	690	690	550	550
FRD	R710	700	1000	725	1025	640	940	500	800
FRD	R713	700	1300	725	1325	640	1240	500	1100
FRD	R719	700	1900	725	1925	640	1840	500	1700
FRD	R811	800	1100	825	1125	740	1040	600	900
FRD	R814	800	1400	825	1425	740	1340	600	1200
FRD	R915	900	1500	925	1525	840	1440	700	1300
FRD	R918	900	1800	925	1825	840	1740	700	1600
FRD	S95	950	950	975	975	890	890	750	750
FRD	R1013	1000	1300	1025	1325	940	1240	800	1100
FRD	R1019	1000	1900	1025	1925	940	1840	800	1700
FRD	S11	1100	1100	1125	1125	1040	1040	900	900
FRD	R1114	1100	1400	1125	1425	1040	1340	900	1200
FRD	R1117	1100	1700	1125	1725	1040	1640	900	1500
FRD	R1215	1200	1500	1225	1525	1140	1440	1000	1300
FRD	R1217	1200	1700	1225	1725	1140	1640	1000	1500
FRD	R1218	1200	1800	1225	1825	1140	1740	1000	1600
FRD	R1224	1200	2400	1225	2425	1140	2340	1000	2200
FRD	S125	1250	1250	1275	1275	1190	1190	1050	1050
FRD	R1319	1300	1900	1325	1925	1240	1840	1100	1700
FRD	R1325	1300	2500	1325	2525	1240	2440	1100	2300
FRD	S13	1300	1300	1325	1325	1240	1240	1100	1100
FRD	S14	1400	1400	1425	1425	1340	1340	1200	1200
FRD	S15	1500	1500	1525	1525	1440	1440	1300	1300
FRD	S16	1600	1600	1625	1625	1540	1540	1400	1400
FRD	S19	1900	1900	1925	1925	1840	1840	1700	1700

Cross - Section



Cross section showing optional 300mm splayed upstand for warm roof installation



Technical Data

Fire Ratings	
Typical Value	Polycarbonate Triple
BS 476: Part 3	AA
BS 476: Part 7	Class 1
1991 Building Regulations	TP (a)*
Impact Resistance	
Soft Body Impact	
EN1873	1200J
ACRM(M) - 2005	Class B Non-Fragile
Thermal Transmission	
Typical Value	W/m²k
Triple Glazed	1.3 **
Light Transmission-Triple Skin	
Clear	70%
Frosted	45%
Heat Reflective	40%
Sound Reduction	
Typical Value	
Triple Glazed	22dB

Information for 3mm thick glazing unless noted otherwise:
 * Class Zero (0) for Building Regulation purposes
 ** Hot Box tested by an independent accredited organisation to EN ISO 12567-2 of October 14, 2005 in the vertical plane.

Product Reference: Keylite Flat Roof Dome (FRD)

- Type:** Dome.
- Size:** Specify from Keylite Product Literature.
- Shape:** Circular, square, rectangular.
- Frame:** Screwbolt - High security.
- Kerb:** PVCu Height 150mm.
- Material:** PVCu - White Self Finish
- Glazing Details:** Polycarbonate Triple Skin.
- Finish:** Clear, frosted.
- Other Requirements:** PVCu Opening Frame And Manual Spindle
- Fixing:** Please Consult Keylite Technical Department For Recommendations.

Flat Roof Dome Polycarbonate Triple Skin Rooflight, Complete With Splayed PVCu 300mm High Kerb, And PVCu Opening Frame And Manual Spindle, Installed To A Prepared Roof Aperture.

GB
 Unit 3 Gateway Road, Burton Gateway,
 Burton upon Trent, DE13 8FL

NI & ROI
 KG2, Ballyreagh Industrial Est. Sandholes
 Road, Cookstown, Co. Tyrone, BT80 9DG

T: +44 (0) 28 8676 7512
 E: technicalsupport@keylite.co.uk

