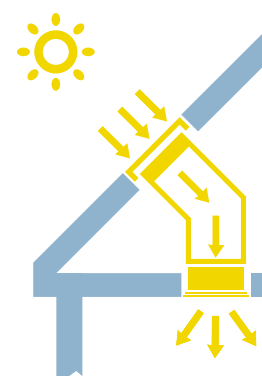


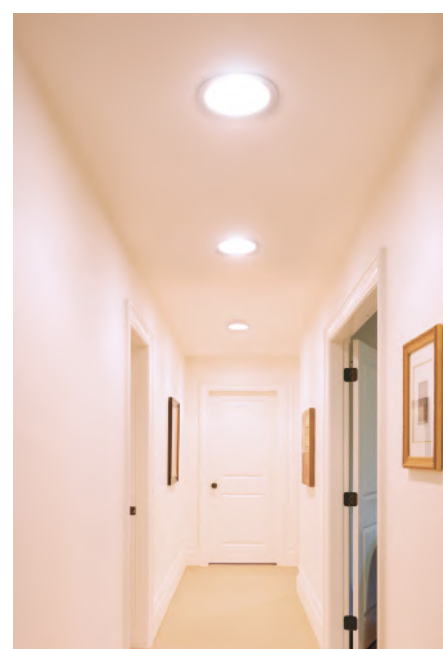
# Sunlite Light Tube System

A Keylite Sunlite transports natural daylight into areas where conventional pitched or flat roof windows cannot be used.



## Features

- ▶ The Keylite Sunlite System consists of a roof mounted external glazing element designed to look like a small Keylite Roof Window.
- ▶ Transforms dark or windowless rooms, considered ideal for bathrooms, stairways and corridors.
- ▶ Saves energy through reducing the requirement of artificial light.
- ▶ Available with a 'Rigid' or 'Flexible' light tube to suit your roof design. These tubes are lined with a mirrored finished in order to provide optimum specular reflectance.
- ▶ Natural daylight enters the Sunlite via the external glazing element and is reflected down the intermediate tubes and into the property through the double glazed ceiling diffuser.
- ▶ Keylites Sunlite ceiling diffuser is uniquely designed so that it is magnetically secured to the ceiling; the benefits of such an innovation are the reduction in internal fixings as well as the ability to easily remove the diffuser for cleaning purposes
- ▶ The diffuser may also be adapted to allow for additional ventilation purposes below.
- ▶ Square ceiling diffusers are available upon request for installation in place of square tiles on a suspended ceiling.
- ▶ The unique connections on the one-piece glazing element allow for an easier installation due to the snap in twist connectors located along the locking ring resulting in a reduction of industrial tape being used.
- ▶ An optional ventilation flap is provided with the external glazing element so as to combat the risk of condensation occurring.



| Sunlite Window System           |              | Size     |          |          |          |
|---------------------------------|--------------|----------|----------|----------|----------|
|                                 |              | 250mmø   | 350mmø   | 450mmø   | 530mmø   |
| Flush Fit Glass Sunlite         | Rigid System | -        | SLRS 350 | SLRS 450 | SLRS 530 |
|                                 | Flexi-System | -        | SLFS 350 | SLFS 450 | SLFS 530 |
| Polycarbonate Dome Sunlite      | Rigid System | SLRS 250 | -        | -        | -        |
|                                 | Flexi-System | -        | -        | -        | -        |
| Flat Roof Polycarbonate Sunlite | Rigid System | -        | SLRS 350 | SLRS 450 | SLRS 530 |
|                                 | Flexi-System | -        | SLFS 350 | SLFS 450 | SLFS 530 |

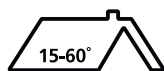
## Sunlite Accessories

| Sizes  | Circular Fluorescent Lamps | Rigid Extension (625mm) |
|--------|----------------------------|-------------------------|
| 250mmø | SLL 250                    | SLRE 250                |
| 350mmø | SLL 350                    | SLRE 350                |
| 450mmø | SLL 450                    | SLRE 450                |
| 530mmø | SLL 530                    | SLRE 530                |

| Recommended Usage                               |                                |                                                             |                                                                  |                                                                    |
|-------------------------------------------------|--------------------------------|-------------------------------------------------------------|------------------------------------------------------------------|--------------------------------------------------------------------|
|                                                 | 250 mm (Diameter)              | 350 mm (Diameter)                                           | 450 mm (Diameter)                                                | 530 mm (Diameter)                                                  |
| <b>Rigid tube</b>                               | En suite, WC, Walk-in-wardrobe | Bathroom, Hallway, Small Landing Suitable for rooms 4m x 4m | Bathroom, Landing, Offices, Corridors Suitable for rooms 5m x 5m | Commercial & Retail, Corridors, Offices Suitable for rooms 6m x 6m |
| <b>Flexi-tube</b><br>Max. recommended length 2m | -                              | En suite, WC, Walk-in-wardrobe                              | Bathroom, Hallway, Small Landings Suitable for rooms 4m x 4m     | Living areas, Large Landings, Kitchen Suitable for rooms 5m x 5m   |

**Note:** When placing your order please specify Tile, Slate or Flat Roof Flashing. If roof void is more than 2m please call the Keylite Technical Team.

## Pitched Roof System



### Flush Fit Glass Sunlite

#### Diameter

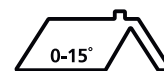
- ▶ 530mm
- ▶ 450mm
- ▶ 350mm

#### Tube length

- ▶ 2m



## Flat Roof System



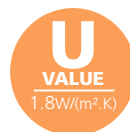
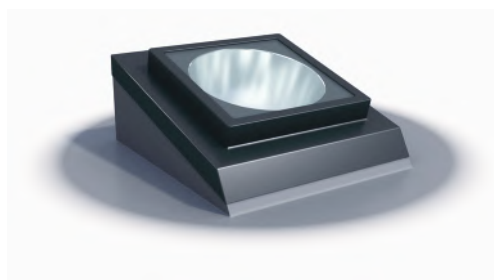
### Flat Roof Sunlite

#### Diameter

- ▶ 530mm
- ▶ 450mm
- ▶ 350mm

#### Tube length

- ▶ 800mm



## Rigid Light Tube System

**For optimum performance**  
Keylite's rigid tube system is made using a hard wearing, mirror finished, polished aluminium tube with 98% reflectance.

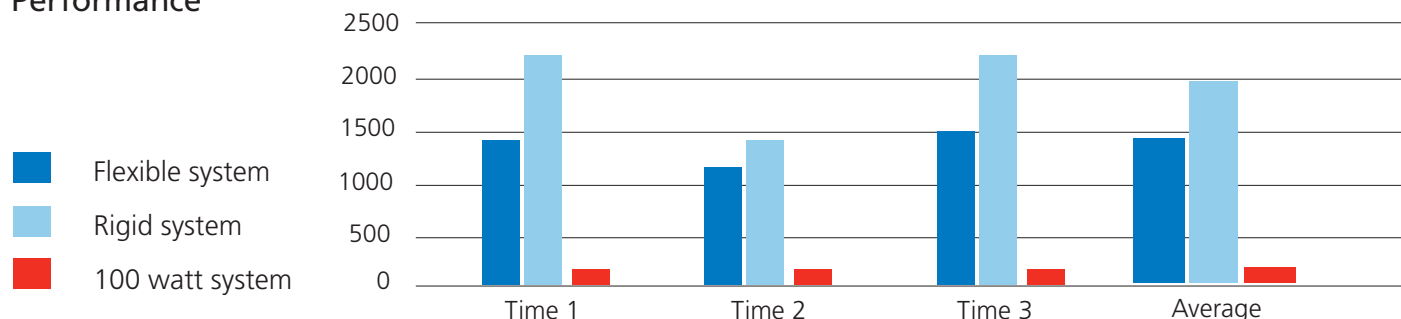


## Flexi Light Tube System

**For versatility**  
Recommended for installations where obstructions within the roof prohibit the use of a rigid system.



## Performance



### GB

Unit 3 Gateway Road, Burton Gateway,  
Burton upon Trent, DE13 8FL

T: +44 (0) 1283 200 158  
E: info@keyliteuk.com

### NI & ROI

Derryloran Industrial Est. Sandholes Road,  
Cookstown, Co. Tyrone, BT80 9LU

T: +44 (0) 28 8675 8921  
E: info@keylite.co.uk