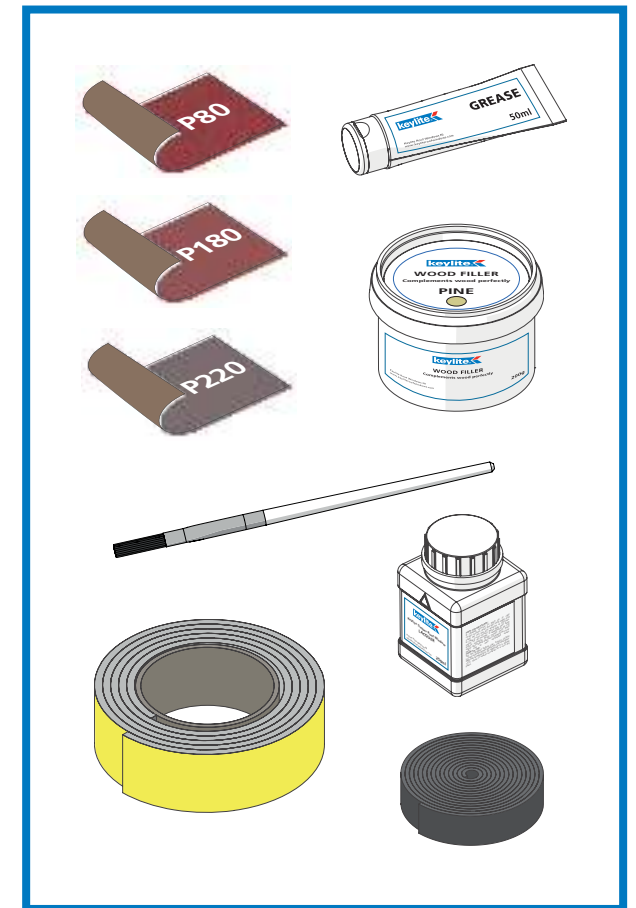
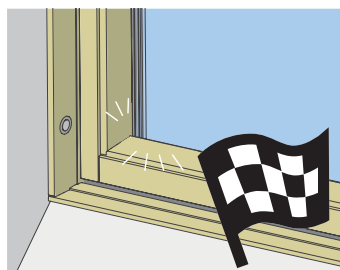
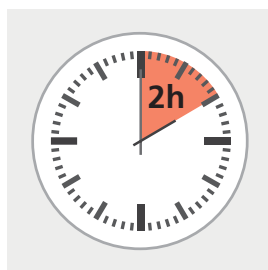
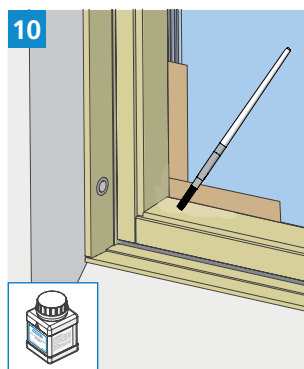
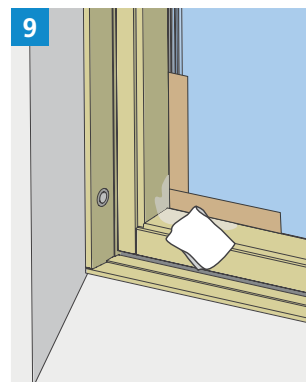
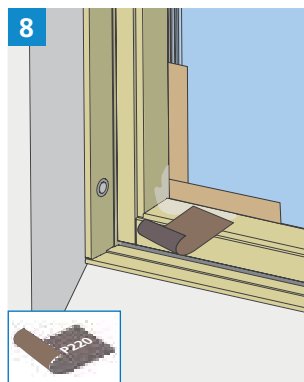
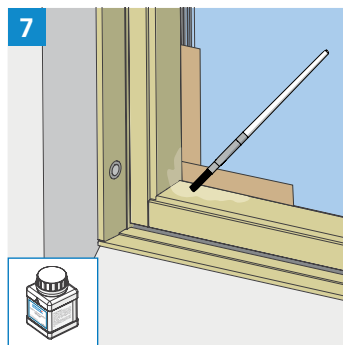
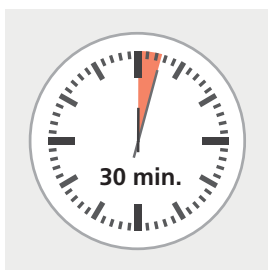
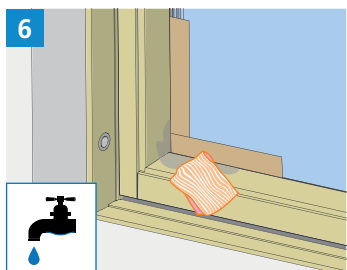
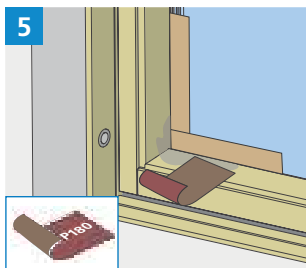
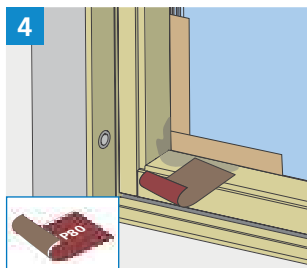
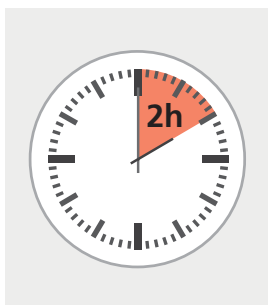
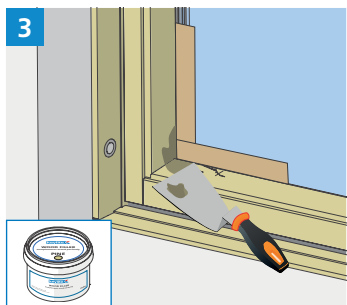
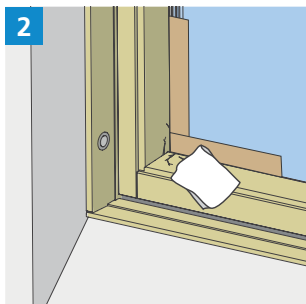
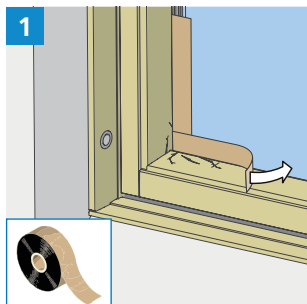


Keylite Timber Roof Windows Maintenance and Service Kit Instructions



Scan QR code to see
more informations about
Maintenance and Service
Keylite Windows

Keylite Roof Windows NI
www.keylitteroofwindows.com



Firefighting Measures

Grease:

Suitable extinguishing media includes water spray, alcohol-resistant foam and CO₂.

Wood Filler:

Suitable extinguishing media includes CO₂, extinguishing powder or water spray.

Lacquer:

Suitable extinguishing media includes CO₂, extinguishing powder or water spray.

Spillage Measures

Grease:

Soak up with inert absorbent material.

Wood Filler:

Collect spilled substance with liquid-binding material (sand, sawdust, etc.).

Lacquer:

Collect spilled substance with liquid-binding material (sand, sawdust, etc.).

Ecological Information

Grease:

Not readily biodegradable.

Wood Filler:

Do not allow to enter ground water, surface water or sewage system.

Lacquer:

Do not dispose into sewage or underground water.

H-statements

Grease:

H304 May be fatal if swallowed and enters airways. H315 Causes skin irritation. H318 Causes serious eye damage. H335 May cause respiratory irritation.

Wood Filler:

N/A

Lacquer:

H302 Harmful if swallowed. H312 Harmful in contact with skin. H315 Causes skin irritation. H317 May cause an allergic skin reaction. H318 Causes serious eye damage. H319 Causes serious eye irritation. H332 Harmful if inhaled. H335 May cause respiratory irritation. H373 May cause damage to organs through prolonged or repeated exposure. H400 Very toxic to aquatic life. H410 Very toxic to aquatic life with long lasting effects. H411 Toxic to aquatic life with long lasting effects. H412 Harmful to aquatic life with long lasting effects.

keylite