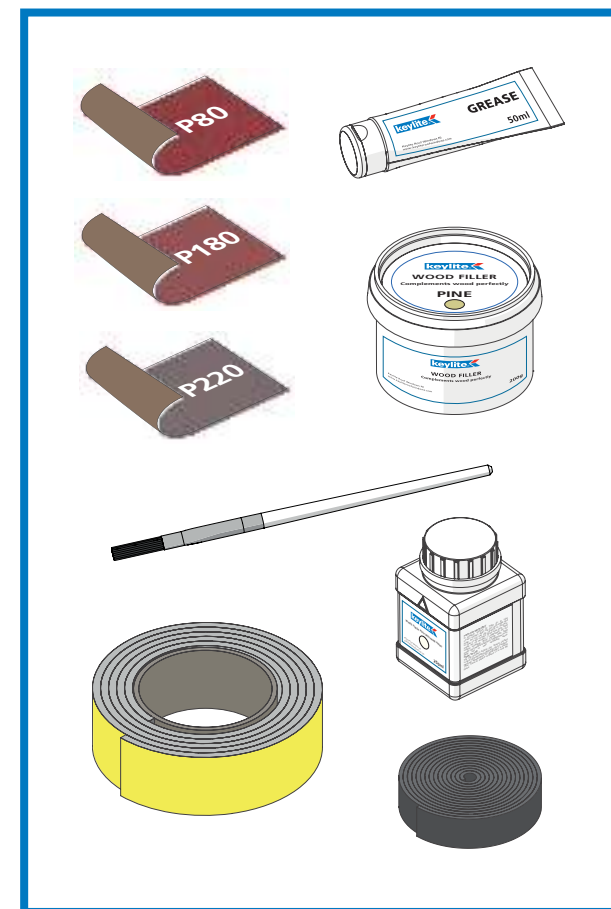
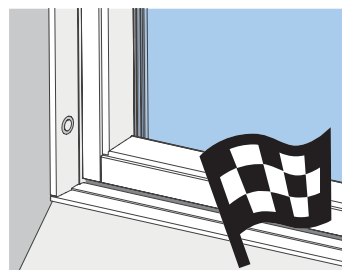
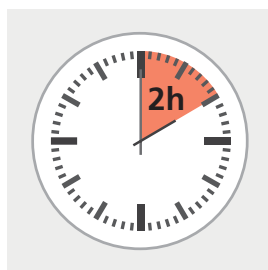
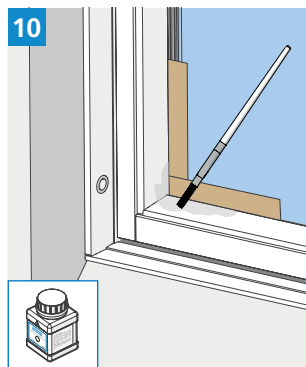
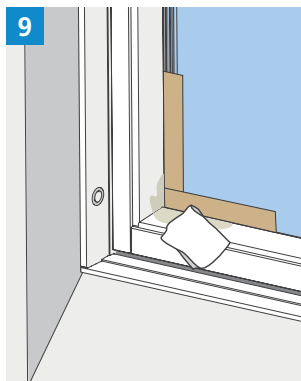
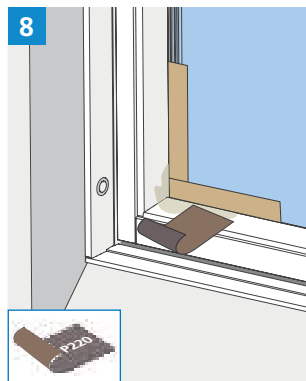
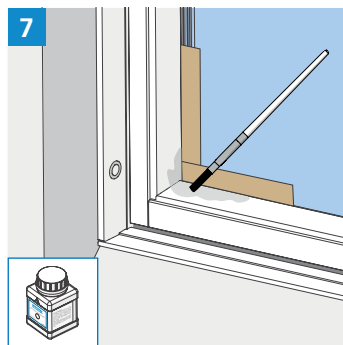
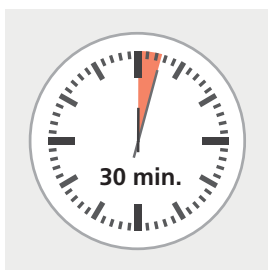
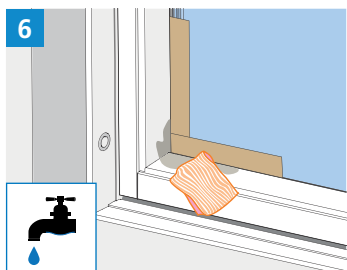
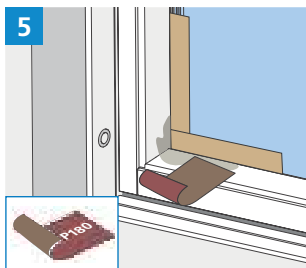
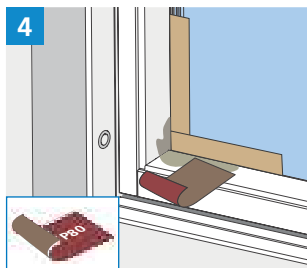
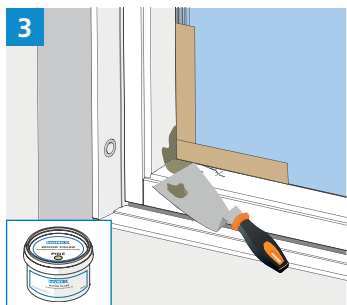
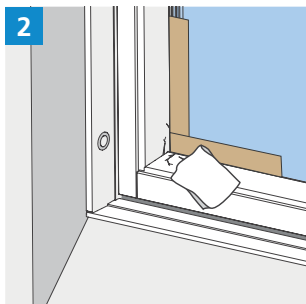
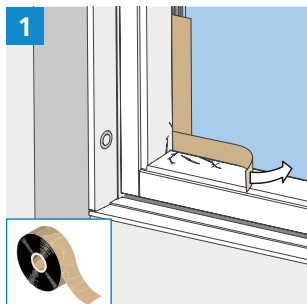


Keylite White Finish Roof Windows Maintenance and Service Kit Instructions



Scan QR code to see
more informations about
Maintenance and Service
Keylite Windows

Keylite Roof Windows NI
www.keylitteroofwindows.com



Firefighting Measures

Grease:

Suitable extinguishing media includes water spray, alcohol-resistant foam and CO₂.

Wood Filler:

Suitable extinguishing media includes CO₂, extinguishing powder or water spray.

White Paint:

Suitable extinguishing media includes CO₂, extinguishing powder or water spray.

Spillage Measures

Grease:

Soak up with inert absorbent material.

Wood Filler:

Collect spilled substance with liquid-binding material (sand, sawdust, etc.).

White Paint:

Material collected removed in a manner consistent with the regulations.

Ecological Information

Grease:

Not readily biodegradable.

Wood Filler:

Do not allow to enter ground water, surface water or sewage system.

White Paint:

Do not allow to enter even in small quantities for groundwater, surface water or sewage. Harmful to aquatic organisms.

H-statements

Grease:

H304 May be fatal if swallowed and enters airways. H315 Causes skin irritation. H318 Causes serious eye damage. H335 May cause respiratory irritation.

Wood Filler:

N/A

White Paint:

H318 Causes serious eye damage. H319 Irritating to eyes. H332 Harmful by inhalation. H400 Very toxic to aquatic organisms. H410 Very toxic to aquatic organisms, may cause long-term adverse effects in the aquatic environment. H411 Toxic to aquatic organisms, may cause long-term adverse effects in the aquatic environment.

keylite